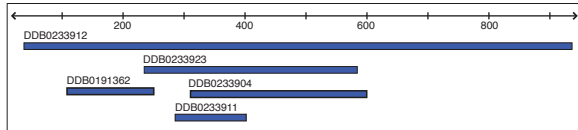


Tools

BLAST

<http://dictybase.org/tools/blast>

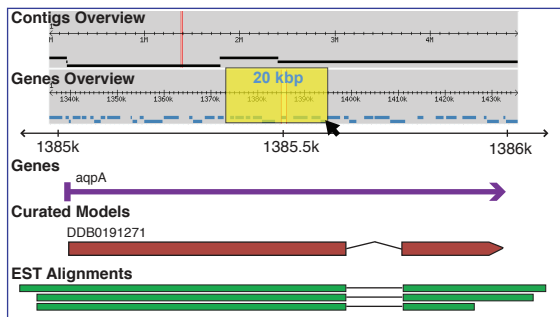
BLAST is accessible from the tabs. The BLAST interface allows analyzing sequence by entering a DDB or DDB_G identifiers. BLAST results now include clickable graphic alignments.



Genome Browser

<http://dictybase.org/db/cgi-bin/ggb/browse/>

Search and view the genome with this dynamic, customizable map where annotations and sequences are displayed on multiple, clickable tracks. Mouse over an area in the 'Overview' region to zoom in or out.

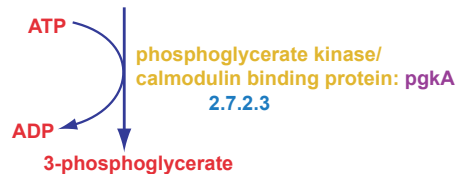


dictyCyc

http://dictybase.org/Dicty_Info/dictycyc_info.html

Explore Dictyostelium **metabolic pathways** with this dynamic display. Browse or search by gene, pathway name, compound, or E.C. number. Pathways are also linked from the Gene Page.

1,3-diphosphateglycerate



Community

Dicty Wiki

<http://wiki.dictybase.org>

Play an active role in gene annotation by adding comments to the [Community Annotations Page](#) linked from every Gene Page.

Dicty ListServ

http://dictybase.org/ListServ_archive/

Receive the dictyNews with abstracts of papers in press and write to the ListServ to ask questions or contribute to discussions. Send your Email to dicty@listserv.it.northwestern.edu

To subscribe, visit:

<http://dictybase.org/db/cgi-bin/dictyBase/colleague/colleagueSearch>

Dictyostelium Info

Find useful information about Dictyostelium on many helpful pages, such as:

- Learn about Dictyostelium
- Pictures/Videos
- Dicty Annual Conference
- Techniques

Dicty Art

<http://dictybase.org/dictyArt/index.html>

The Leaders

*From the beginning of the journey,
it is we who lead the way,
we call the tune
we beat the drum
we send our chemical messages
and you.... you must obey.*

*But at the journey's end,
at the culmination of it all,
we are the stalk and the stem
who raise you up to the sky
so that you might live
while we...we must die.*

Paul Fisher



Paul Dear

dictyBase Contact

Contact us with any questions or comments at dictybase@northwestern.edu

dictyBase

Search & Download

Gene Information

GO & Phenotypes

Tools

Community

Search & Download

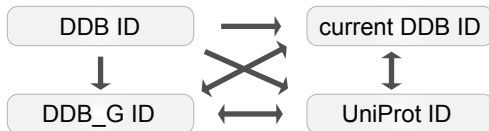
General Search

- Genes (names, synonyms)
- IDs (DDB, DDB_G, UniProt...)
- Protein domains
- Gene Ontology terms
- dictyBase web pages
- Phenotypes
- Strains
- Plasmids
- Colleagues
- Authors

Speed up your search by using 'Gene Names Only' when restricting search to gene names and synonyms.

ID Converter

<http://dictybase.org/tools/convert>



dictyMart

<http://dictybase.org/biomart/martview>

Use dictyMart to retrieve:

- DNA and protein sequences
- gene flanking regions and exon positions
- genes with specific GO annotations
- genes with ESTs



Downloads

<http://dictybase.org/Downloads/>

- Gene Information
- Dictyostelium Sequences and Annotations
- Genes on AX3/AX4 Chr. 2 Duplication
- Mutant Phenotypes
- Phenotype Ontology
- Protein Domains
- GO Gene Association File
- Dictyostelium Phenotype and Anatomy Ontologies
- References

Gene Information

Gene Summary

<http://dictybase.org/gene/piaA>

The new Gene Page allows tabbed browsing. Individual sections can be collapsed and this setting is 'sticky' in your browser. Help is always just one click away.

Gene Summary | Protein Information | Gene Ontology | Phenotypes | References | BLAST

General Information	
Gene Name	<i>piaA</i>
Name Description	pia = PIAissimo
Alternative Gene Names	DG1117, <i>amiA</i> , <i>pia</i>
Gene ID	DDB_G0277399

The Gene Product section informs about the gene model status, protein length and weight, and exon coordinates. Get a **FastA file** in a single click. For a quick **BLAST** search, preselect a sequence, hit 'Blast' and a new window opens with preset parameters. Using the default settings, click 'Blast' again and results appear in another window shortly after.

Gene Product Information

Protein Coding Name	DDB0185055 (Curator reviewed) Derived from gene prediction.	Genomic Coordinates	Exon	Local Co.	Chrom. Co.
Protein Length	1,148 aa		1	293 - 308	8027 - 8029
Protein Mol. Weight	129,527.5 Da		3	964 - 1203	8031 - 8165
More Protein Data	Protein sequence, domains and more...				
Sequence	Protein [Get Fasta] [BLAST]				

Protein Information

<http://dictybase.org/gene/corA/protein>

The Protein tab contains all available protein information including annotations from UniProt (if available), domains, and sequence. Mouse over a domain to get more information and protein coordinates. Click on a domain and find links to the domain sources.

Gene Summary | Protein Information | Gene Ontology | Phenotypes | References | BLAST

General Information

Gene Product: coronin actin binding protein

Protein Domains

(click on track to get information about a particular domain)

Table view

GO, Phenotypes & Strains

Gene Ontology (GO)

<http://dictybase.org/gene/talA/go>

Gene Ontology annotations are found under the Gene Ontology tab. Find genes annotated to a specific GO term by clicking on it. All GO terms are supported by an evidence and a reference.

Gene Summary | Protein Information | Gene Ontology | Phenotypes | References | BLAST

Molecular function	Evidence Code	Reference
actin binding	IEA (Inferred from Electronic Annotation) from InterPro: IPR002558	

Biological process	Evidence Code	Reference
phagocytosis	IMP (Inferred from Mutant Phenotype)	

Cellular component	Evidence Code	Reference
filopodium tip	IDA (Inferred from Direct Assay)	

Phenotypes

<http://dictybase.org/gene/mhkA/phenotypes>

The Phenotype tab lists all strains with their associated phenotype(s) and the associated references. In addition, all Stock Center availability is easily visible by a green icon. Click and link to your shopping cart.

Gene Summary | Protein Information | Gene Ontology | Phenotypes | References | BLAST

Strain	Characteristics	Phenotype	Reference
mhkA-	null mutant	increased myosin II assembly	
mhkA/mhkB	multiple null mutant	increased myosin II assembly	
		aberrant cytokinesis	
mhkA/mhkC	multiple null mutant	decreased growth rate	

Stock Center

<http://dictybase.org/StockCenter/StockCenter.html>

The Dicty Stock Center is now located at Northwestern University. The Stock Center collection currently contains about 1500 strains and 500 plasmids. Search strains in the general dictyBase search tool, and more efficiently, in the Stock Center search tool. Strains are also available from the Phenotype tab on each gene page. Order materials using an easy **shopping cart** system. Contact the Stock Center staff at dictystocks@northwestern.edu